



SPECIFICATION

Silicone neon flex

Ultra-slim size, flexible bending. changes into thousands of styles.

IP67 excellent weather resistance.



Al Dhaw Al Mathali Lighting Equip. Tr. L.L.C

Add: Industrial Area 13, Shop No. - B-6 Tesheel Parking, Sharjah, U.A.E

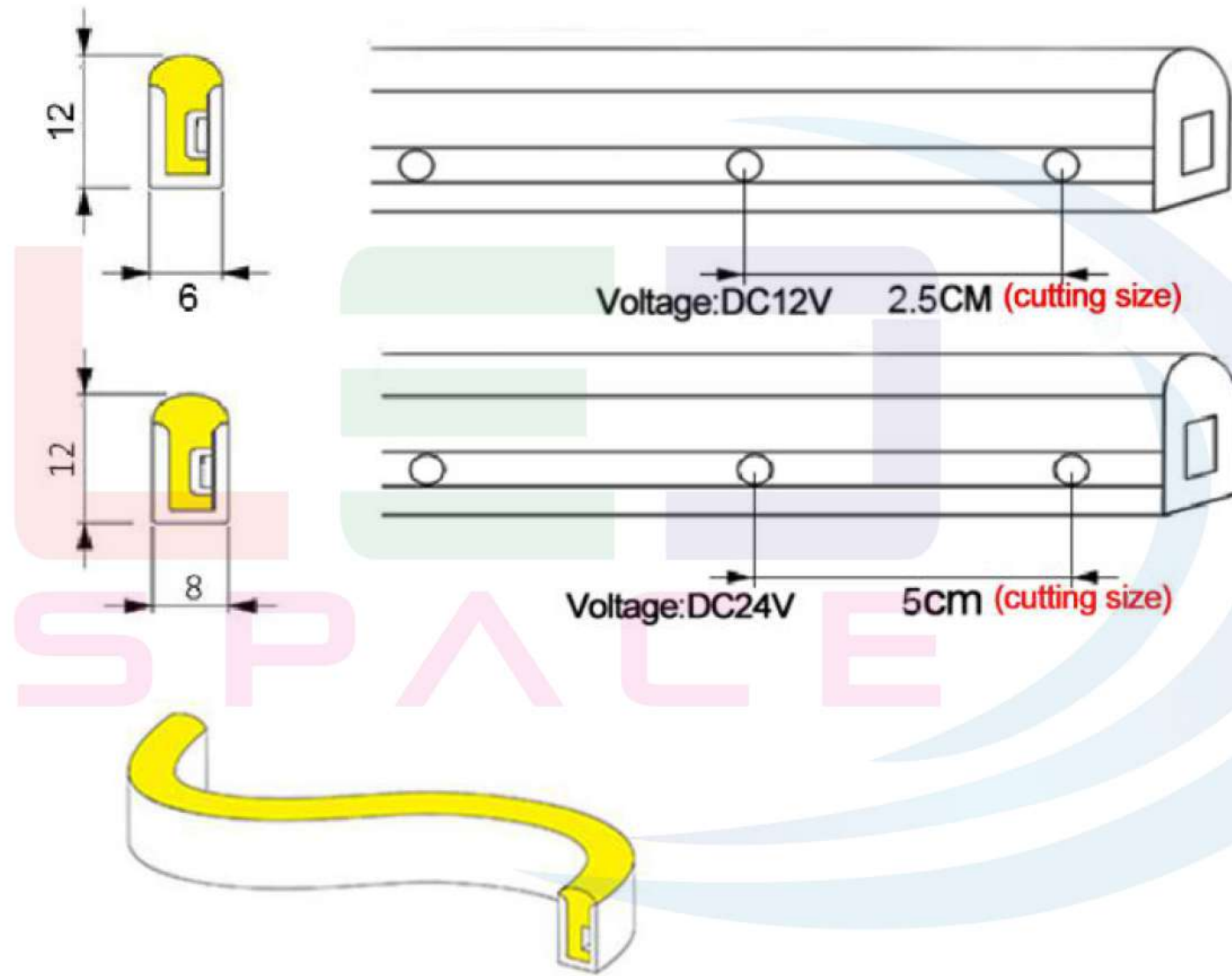
Mobile: 050-6424 503, 052-11890503, kamil@ledspace.ae



Features:

- Light source: High luminous efficiency, SMD2835 LM80 proved.
- Process & Material: High light transmittance, food-grade environmental silicone material, integrated extrusion molding technology, IP67.
- Optical Design: Unique optical light distribution structure design, uniform lighting surface and no shadow.
- Appearance Design: Compared with the traditional neon tube or PVC guardrail tube, the silicone material has good flexibility, the simple and stylish appearance, which is exquisite and unique.
- Product Certification: ETL、CE、ROHS.
- Environmental Features: Resistance to saline solutions, acids&alkali, corrosive gases and UV.
- Working/Storage Temperature: Ta:-35~60°C / 0°C~60°C.
- Life Span: 30000H, 3years warranty.

Structure Parameters:



L

S P

FPC

diffuser

Outer sleeve



Basic Parameters:

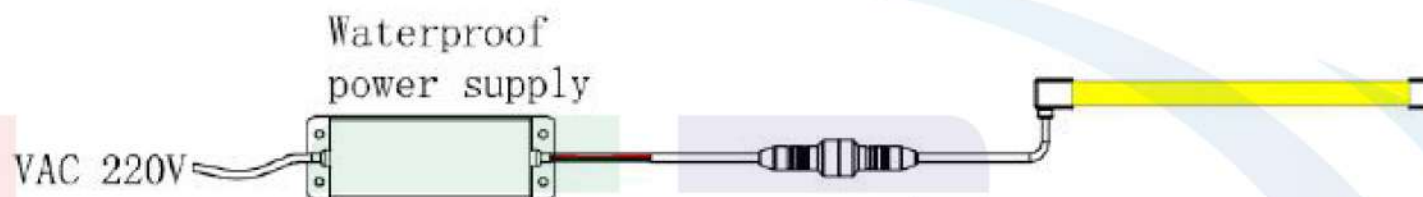
Model	CCT/Colors	Input voltage (V)	Rated power (W)	Lumens (LM)	Size(MM)	Beam angle	IP	Cutting unit (MM)
XM8DW-DC12v-2835-120-S6	white	DC12v&DC24V	10	390	W6*H12	120°	IP67	25mm & 50mm
	warm white			400				
XM8DW-DC12v-2835-120-S	R 620-630nm	DC12v&DC24V	10	/				
	G 510-515nm			/				
	B 455-0460nm			/				
XM8DW-DC12v-5050-78-RGB	RGB R 620-630nm G 510-515nm B 455-0460nm	DC12v&DC24V	12	180	W8*H16			40mm & 80mm

Note:

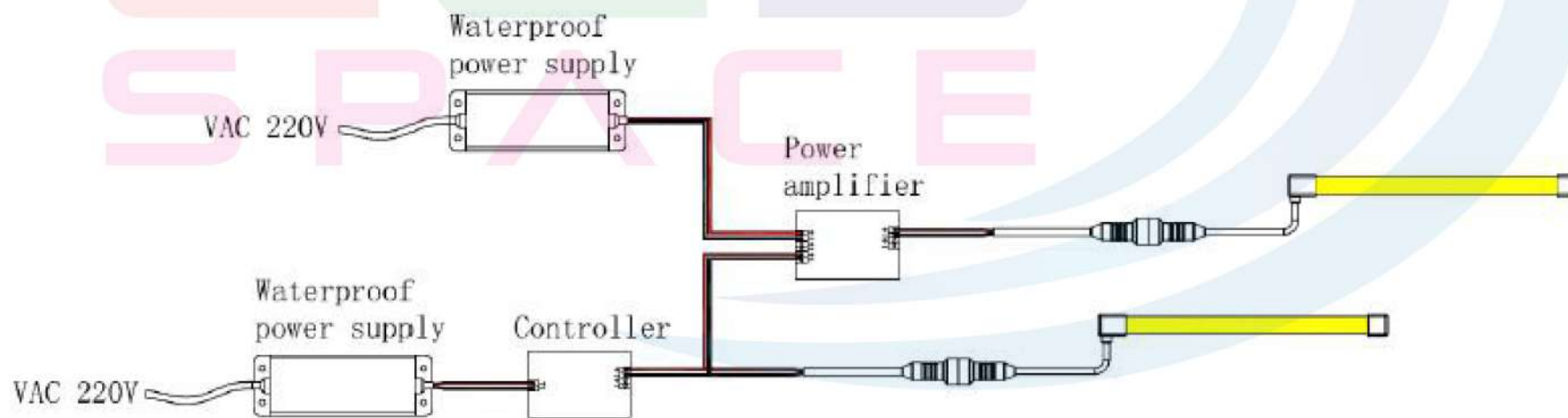
- 1、The above data is the testing result of 1M standard product;
- 2、The power and lumens of output data can be vary up to $\pm 10\%$;
- 3、The above parameters are all typical values;

Wiring Diagram:

Non-dimming connection mode:



Dimming connection mode:



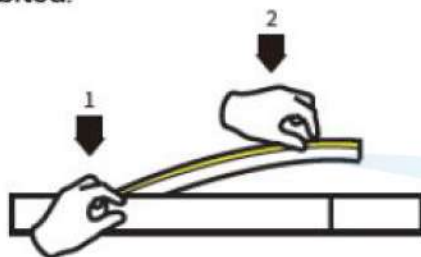
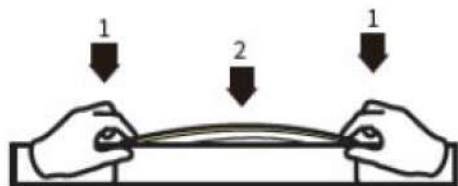
Application

- > Advertising sign> shopping mall/KTV > Hotel/museum/office > shop/outdoor> Gas station
- > Railway/MTR station

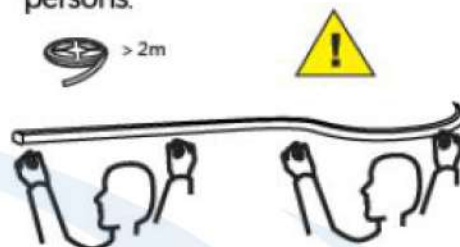


Installation of carrier

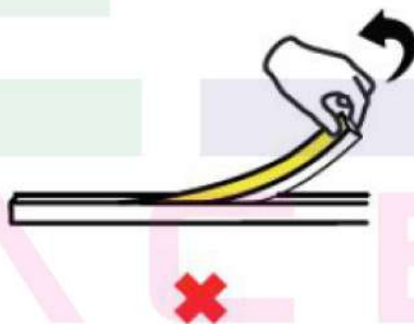
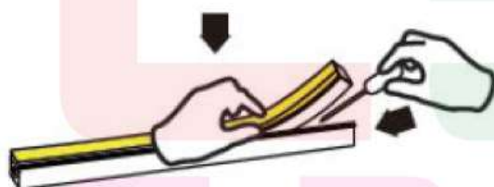
1. When installing the LED strip, install it from both ends at the same time, installation from one direction is prohibited.



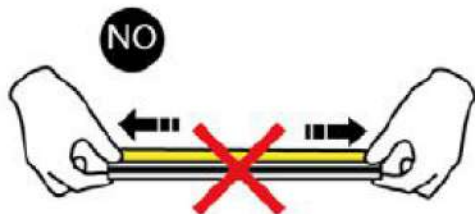
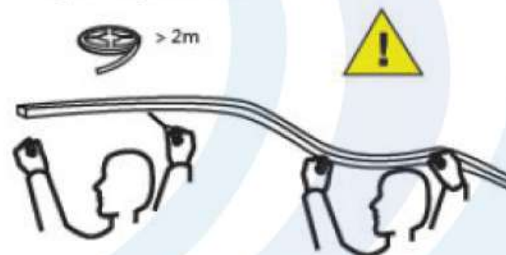
- ⚠ If the length of LED strip is over 2m, it is recommended to install by two persons.



2. Use tool to disassemble carefully, and do not pull the LED strip directly.



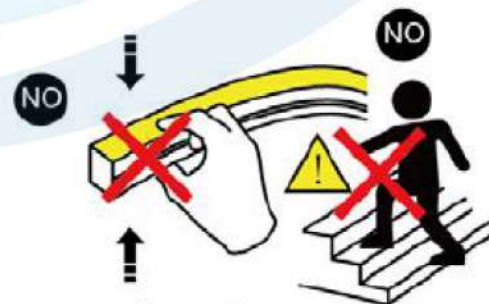
- ⚠ If the length of LED strip is over 2m, it is recommended to disassemble by two persons.



No stretching



No contorting



No trampling

Precautions:

- Use a 12V&24VDC isolated power supply to drive the neon lamp strip and the ripple wave of constant voltage source shall be less than 5%. It is not allowed to use RC voltage reduction or non-isolated power supply to drive the neon lamp strip.
- In actual applications, 20% of the power supply shall be kept (only 80% of the power is used) to guarantee that sufficient voltage is available to drive the product.
- Attention shall be paid to safe operation. After powering on, it is not allowed to touch the AC power supply to avoid an electric shock.
- Attention shall be paid to the positive and negative poles of the wires during installation and whether the power supply conforms to required voltages to avoid damages.
- Avoid scratching, distortion and irregular bending of the product during installation; otherwise it may cause irreparable damage to the product.
- Please do not bend the strip into an arc with a radius less than 60mm to ensure the longevity and reliability, the bending radius too small will damage the product itself.
- If the actual length of application exceeds the specified using length, it will lead to overload heating and uneven brightness.
- To keep the eyes from being harmed, try to avoid staring at the glowing side of the LED strip for a long time.
- Non-professionals are prohibited from installing, disassembling and repairing the product.
- Do not use any acid or alkaline adhesive to fix products (including not limited to glass cement, etc.)
- Product is not suitable for use in swimming pools and fountains.